

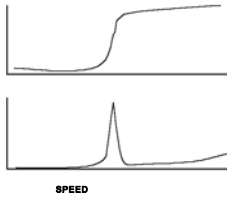
Diagnostic Techniques-Part 3

Transient Analysis

Transient analysis is the study of how various signals change during a machine's process or load change. This analysis is particularly important during a machine's startup or shutdown when critical speeds or natural resonances are encountered. Observing the overall amplitudes or individual spectra will not be sufficient to document how the entire machine behaves during transient conditions. Data collection modes fall into two general categories: observing transducer output signals with respect to machine speed and observing transducer output signals with respect to time. Sometimes, a combination of the two modes may be required.

BODE' PLOT

A Bode', pronounced bow-day, plot is a display of three variables: signal amplitude, machine speed, and phase angle. The three variables are usually synchronized to the machine operating speed, but occasionally may be synchronized to some multiple of machine speed depending upon the type of machine fault being investigated.

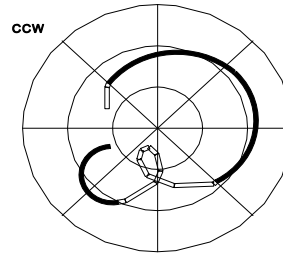


The Bode' plot is essentially two displays: phase angle versus machine speed and amplitude versus machine speed. Analysis of the plot can determine at what speed(s) a critical speed exists, the amount of runout associated with a Non-Contact PickUp (NCPU), the balance condition, system damping, and the operating phase angle and amplitude at various machine speed.

POLAR PLOT

The polar, or nyquist, plot is also a plot containing the same three variables as a Bode' plot. The variables are plotted on a single circular chart instead of two separate plots. The

center of the plot represents zero speed and zero amplitude with subsequent amplitude and

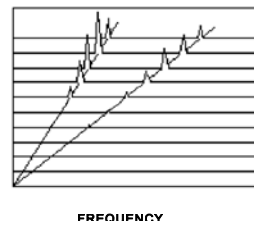


phase angle measurements plotted with their associated machine speed. Phase angle measurements are plotted around the circumference of the chart, against machine rotation direction. Polar plots are always filtered to machine running speed or some multiple of the machine speed, depending upon the fault being investigated.

Machine critical speeds and natural resonances are displayed as loops, with the critical speed situated 90° from the start of the loop. This characteristic makes identification of resonances and critical speeds easy. Other information available from the plot are: slow speed runout associated with NCPUs, system damping, balance condition, and operating phase angle and amplitude at various machine speeds.

CASCADE PLOT

Cascade or Waterfall plots, also have three displayed variables: amplitude, frequency, and



machine speed. This display differs from the other transient plots because it is essentially a collection of spectra. Each spectrum is associated with a specific machine operating speed. Setting the maximum frequency (Fmax) and the spectrum resolution are important for accurate diagnosis. See the Application Note, Diagnostic Techniques-Part 2, Frequency Domain for further discussion of these settings.

Transient Analysis Checklist

1. Bode Plot "
2. Polar Plot "
3. Cascade Plot "