

CMCP 240 Proximity Switch Installation Instructions

Features

- Short Barrel
- 3-Wire Hookup
- Meets IP670
- Thick nickel-plated brass barrel
- Wrench flats for easy installation
- Solid potted internal circuitry
- Withstands shocks and water
- High visibility indicator
- Integral 2 Meter Cable

Mounting

- Do not tighten the nut with excessive force
- A washer must be used with the nut
- Suggested rating is 30 NxM
- Do not subject to excessive shock with a hammer during installation
- Do not mount under water

Installation

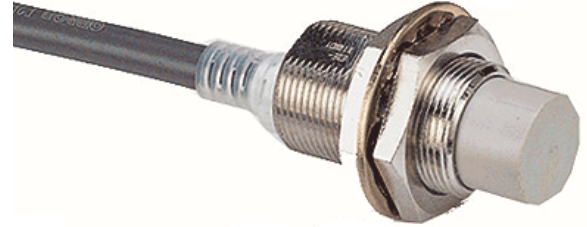
- Sensor is ready to operate within 100 ms after power is supplied
- Sensor may output a pulse signal when it is turned off
- Do not use a DC power supply with an auto-transformer

Sensing Object

- Sensing distances may vary with the metal coating on sensing objects

Wiring

- If there is a power or high-tension line near the cable of the sensor, wire the cable through an independent metal conduit to prevent against sensor damage / malfunction



Size	M12
Type	Shielded
Sensing Distance	2 mm +/- 10%
Supply Voltage	12 to 24 VDC
Current Consumption	13 mA max
Circuit Protection	Reverse Connection, Surge Absorber, Short-Circuit
Operating Temperature	-40 Deg. C to 85 Deg. C, 95% RH
Enclosure Rating	IP67, NEMA 1,4,6,12, 13
Body Material	Stainless Steel
Face Material	PBT
Contact Type	No
Amplifier Type	Self-contained
Output Type	NPN or PNP
Connection	Pre-wired
Shielded / Unshielded	Shielded
Response Frequency	1.5 kHz

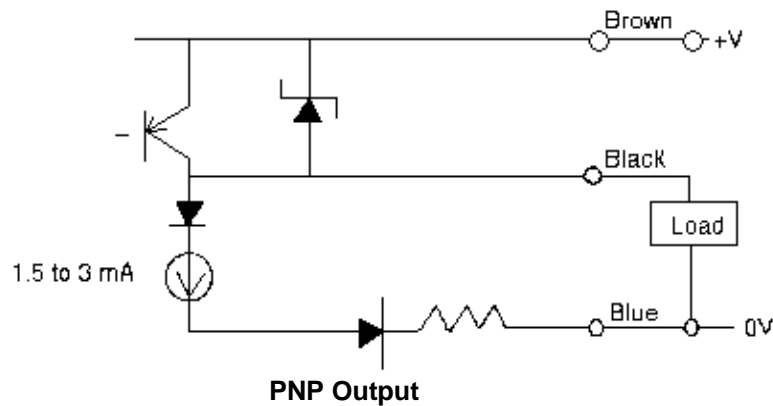
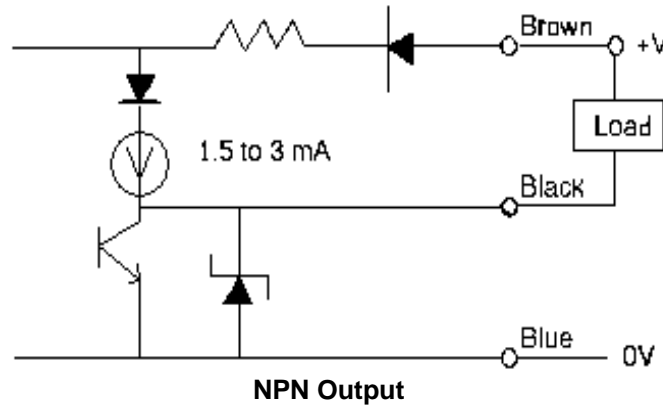
Part No.	-XXX	-XX	Description
CMCP240	-NPN		NPN Output (Standard)
		-PNP	PNP Output
			-00 Without Mounting Bracket
			-01 With Mounting Bracket

To Order Online Please Visit
www.stiwebstore.com

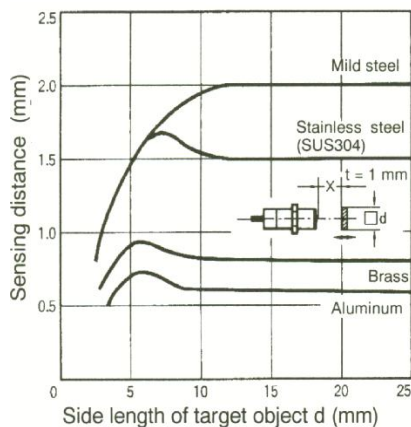
Condition Monitoring Custom Products

CMCP 240 Proximity Speed Sensor Installation Instructions

Output Circuits



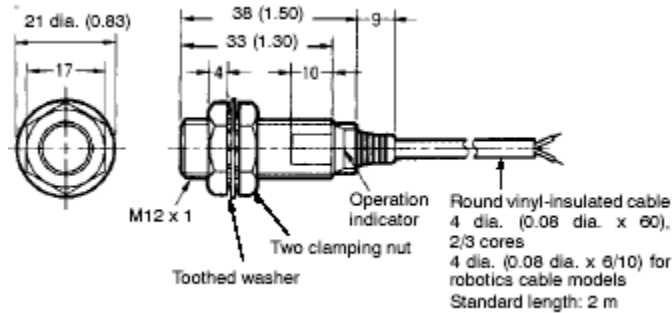
Sensing Distance Vs. Sensing Object



Condition Monitoring Custom Products

CMCP 240 Proximity Speed Sensor Installation Instructions

Dimensions



Mounting Clearance Dimensions

