

# CMCP 240 Proximity Switch Installation Instructions

## Features

- Short Barrel
- 3-Wire Hookup
- Meets IP670
- Thick nickel-plated brass barrel
- Wrench flats for easy installation
- Solid potted internal circuitry
- Withstands shocks and water
- High visibility indicator
- Integral 2 Meter Cable

## Mounting

- Do not tighten the nut with excessive force
- A washer must be used with the nut
- Suggested rating is 30 NxM
- Do not subject to excessive shock with a hammer during installation
- Do not mount under water

## Installation

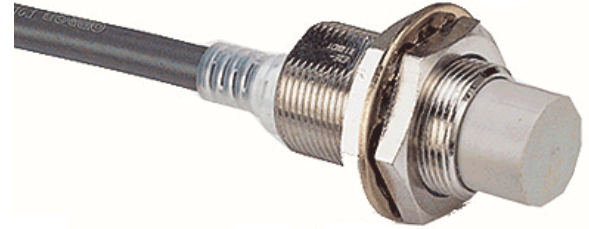
- Sensor is ready to operate within 100 ms after power is supplied
- Sensor may output a pulse signal when it is turned off
- Do not use a DC power supply with an auto-transformer

## Sensing Object

- Sensing distances may vary with the metal coating on sensing objects

## Wiring

- If there is a power or high-tension line near the cable of the sensor, wire the cable through an independent metal conduit to prevent against sensor damage / malfunction



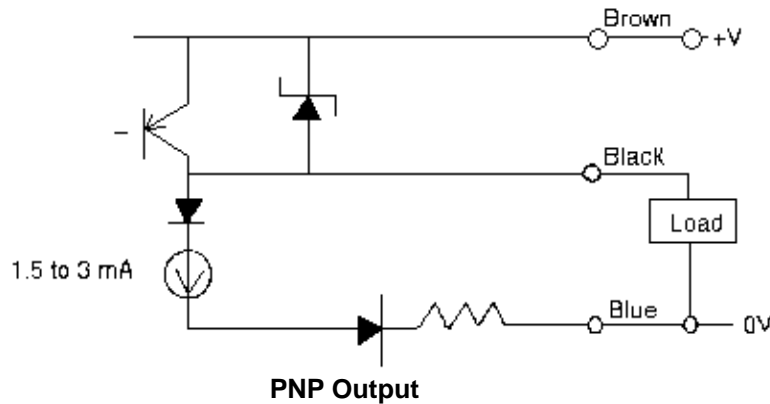
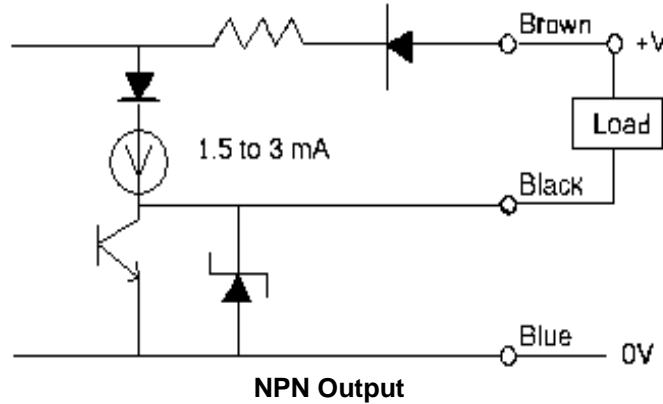
<b>Size</b>	M12
<b>Type</b>	Shielded
<b>Sensing Distance</b>	2 mm +/- 10%
<b>Supply Voltage</b>	12 to 24 VDC
<b>Current Consumption</b>	13 mA max
<b>Circuit Protection</b>	Reverse Connection, Surge Absorber, Short-Circuit
<b>Operating Temperature</b>	-40 Deg. C to 85 Deg. C, 95% RH
<b>Enclosure Rating</b>	IP67, NEMA 1,4,6,12, 13
<b>Body Material</b>	Stainless Steel
<b>Face Material</b>	PBT
<b>Contact Type</b>	No
<b>Amplifier Type</b>	Self-contained
<b>Output Type</b>	NPN or PNP
<b>Connection</b>	Pre-wired
<b>Shielded / Unshielded</b>	Shielded
<b>Response Frequency</b>	1.5 kHz

## Ordering Information:

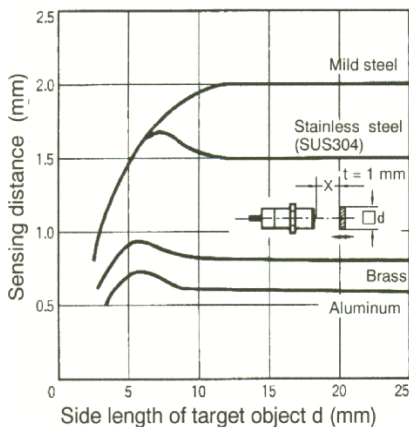
Part No.	-XXX	-XX	Description
CMCP240	-NPN		NPN Output (Standard)
		-PNP	PNP Output
			-00 Without Mounting Bracket
			-01 With Mounting Bracket

# CMCP 240 Proximity Speed Sensor Installation Instructions

## Output Circuits

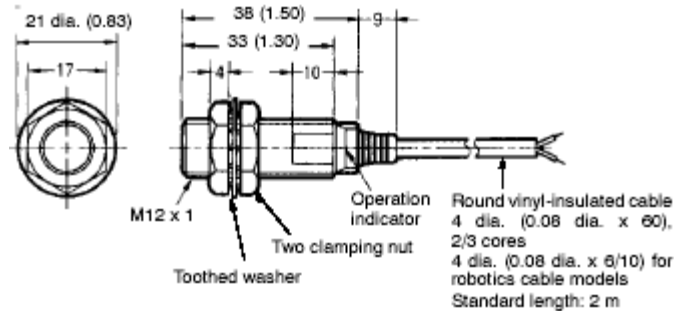


## Sensing Distance Vs. Sensing Object



## CMCP 240 Proximity Speed Sensor Installation Instructions

### Dimensions



### Mounting Clearance Dimensions

