

## CMCP610 Series

### QuickClick Static Proximity Probe Calibrator



#### Features:

- Used to Verify Proximity Probe Calibration
- QuickClick for Precise Incremental Measurements
- 1.00" (25.4mm) Range
- 1.5" (38.1mm) Target For Up to 11mm Probes
- 4140 Steel Target
- Benchtop or Magnetic Base Mounting
- Excel Spreadsheet Calibration Report Provided
- Travel Case Included
- Custom Target Materials Available

The **CMCP610 Static Proximity Probe Calibrator** provides a convenient and precise method of verifying the voltage output versus physical gap of a proximity probe and driver system. The CMCP610 is designed for use in the field or shop environment and will work with any manufacturer's 5mm, 8mm or 11mm probes. Collets are provided for 1/4", 3/8", M8, M10 and M14 probes to allow the user to easily adapt the calibrator for the most popular sizes. 1/2" and 5/8" probes can be used without the collet by being held in place with the brass thumbscrew provided with the kit.

The CMCP610 is supplied with a replaceable precision 1.5" diameter 4140 steel spindle target for verifying calibration per API 670. Other target materials are available upon request to match specific shaft materials.

STI's patented QuickClick micrometer allows the user to easily adjust the micrometer in 0.005" (English option) or 0.1mm (Metric option) increments quickly and reliably, improving the overall time it takes to complete a report and with greater precision. The QuickClick can be disengaged to allow for 0.001" or 0.1mm graduations.

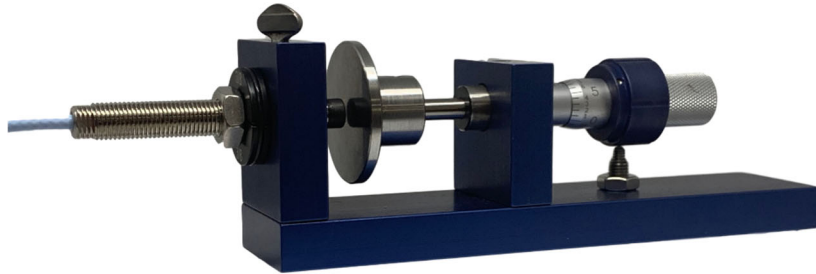
The CMCP610 is provided with a USB thumb drive which includes a field calibration reporting tool for use with Microsoft Excel.

**Eddy Probe Graph**



Specifications:	
Dimensions:	6.5"x2.0"x3.2" (165.1x50.8x81.28mm)
Weight:	1.4 lbs (0.64kg)
Target Material:	4140 Steel (Others Available Upon Request)
Target Size:	1.5" (38.1mm)
Probe Collet Sizes:	1/4", 3/8", M8, M10, 1/2" and M14
Material:	Anodized Aluminum
Micrometer Range:	1.0" (25.4mm)
Micrometer Adjustment:	0.001" (English Option) 0.01mm (Metric Option)

QuickClick Adjustment:	0.005" (English Option) 0.1mm (Metric Option)
Magnet Strength:	45 Lb Pull (Curved Surface Magnet)



CMCP610 Shown with 8mm Probe Installed. Probe Not Included with Kit

Ordering Information:		
CMCP610	-XX	Description
	-E	English Micrometer (mils)
	-M	Metric Micrometer (mm)

Custom Targets Available on Request

Similar Products:		
 <p><b>CMCP-TKPC</b> Pocket Calibrator</p>	 <p><b>CMCP-TKSC</b> Shaft Calibrator</p>	 <p><b>CMCP-TKPro</b> Vibration Test Kit</p>