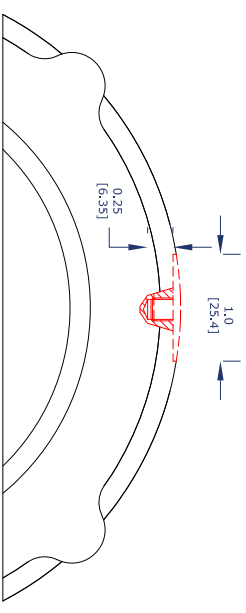
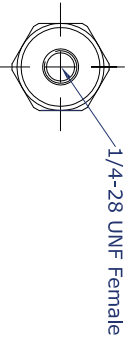
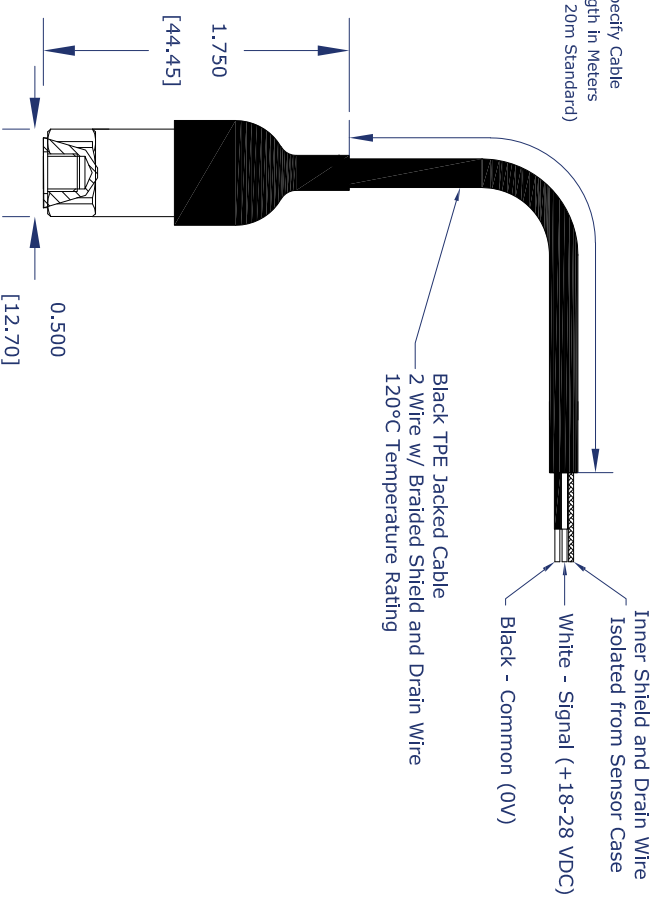


9 8 7 6 5 4 3 2 1

Specify Cable Length in Meters (5, 10 20m Standard)



- Installation**
1. Drill hole approximately 0.25" Deep
 - 1/4-28 Sensors: #3 Drill Bit
 - M8x1.25 Sensors: 6.8mm Drill Bit
 - Spot Face Location Using 1.0" Centerline
 3. Tap Hole for Required Thread Size
 4. Clean Holes from Surface
 5. If not using the supplied mounting pad and sensor, install sensor
- Suggested Mounting Kit**
- CNC2270-01-T for 1/4-28 UNF Sensors
 - CNC2270-02-T for M8x1.25 Sensors
 - CNC2270-03-T for M8x1 Sensors

THIS DOCUMENT IS THE PROPERTY OF STI AND SHALL BE RETURNED TO STI WITHOUT DELAY. IT IS TO BE KEPT IN THE ORIGINAL ENVELOPE AND NOT REPRODUCED OR USED FOR ANY OTHER PURPOSES WITHOUT THE WRITTEN CONSENT FROM STI. THIS DOCUMENT CANNOT BE REPRODUCED OR USED FOR ANY OTHER PURPOSES WITHOUT APPROVAL FROM STI.

CUSTOMER	STI
LOCATION	
ORDER NO.	
UNLESS OTHERWISE SPECIFIED	
ALL DIMENSIONS ARE INCHES.	
TOLERANCES:	
DECIMALS	XX ± 0.01
FRACTIONS	X/16 ± 0.005
ANGLES	± 1.0
APPROX.	M. Howard
DATE	May 6, 2020

STI Vibration Monitoring
League City, Texas

REV	DATE	BY	DESCRIPTION
A			

- Notes:
- 1.
 - 2.
 - 3.
 - 4.
 - 5.

9 8 7 6 5 4 3 2 1