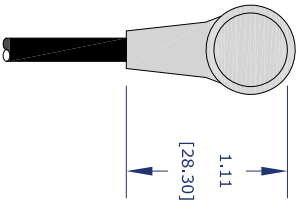
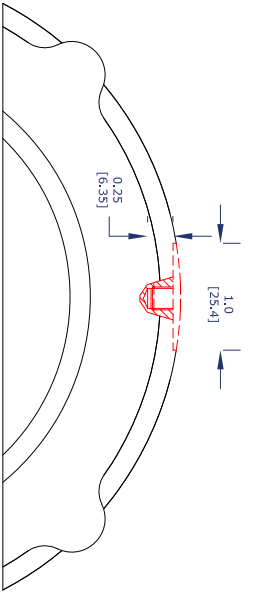
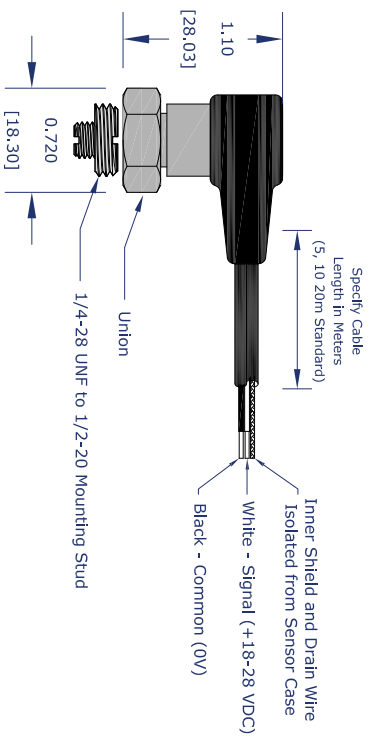
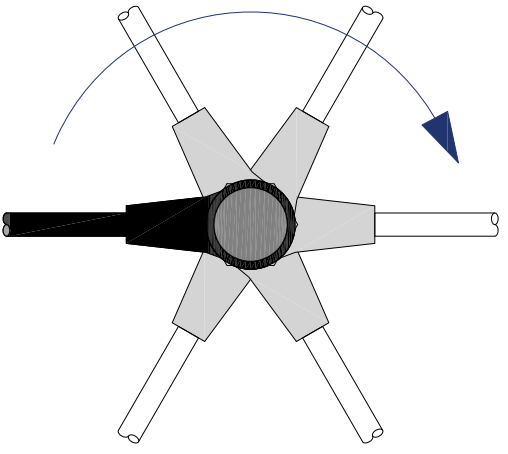


9 8 7 6 5 4 3 2 1



Adjustable Cable Direction



- Installation**
1. Drill approximately 0.25" Deep 1/4-28 Sensors; a 3/32" Drill Bit
 2. Spot Face Location Using 1/8" Centerbore
 3. Tap Hole for Required Thread Size
 4. If Not Drilled from Surface
 5. If Not Drilled from Surface, Use Mounting Pad and Sensor
- Suggested Mounting Kit**
- CNC2270-01-T For 1/4-28 UNF Sensors
 - CNC2270-02-T For M8x1.25 Sensors
 - CNC2270-03-T For M8x1 Sensors

THIS DOCUMENT IS THE PROPERTY OF STI AND SHALL BE RETURNED TO STI WITHOUT DELAY. IT IS NOT TO BE REPRODUCED OR TRANSMITTED IN ANY FORM OR BY ANY MEANS, WITHOUT PERMISSION FROM STI.

CUSTOMER	
LOCATION	
ORDER NO.	
SERIAL NO.	

STI
STI Vibration Monitoring
League City, Texas

UNLESS OTHERWISE SPECIFIED ALL DIMENSIONS ARE IN INCHES.	Drawn: M. Howard	Check: M. Howard	Rev: 1	CMCP1100 Series	Rev: A
TOLERANCES:	DATE: May 6, 2020	DATE: May 6, 2020	DATE: May 6, 2020	CMCP1100SR	Scale: 1:1
DECIMALS: XX ± 0.01					
FRACTIONS: XX ± 0.01					
ANGLES: ± 1.0					
APPROX: ± 0.0005					

- Notes:
- 1.
 - 2.
 - 3.
 - 4.
 - 5.

9 8 7 6 5 4 3 2 1