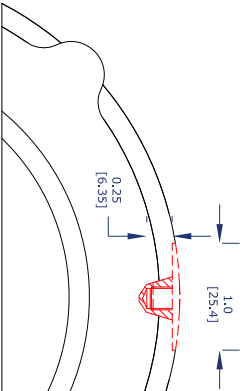


1/4-28 UNF Female



- Installation**
1. Drill hole approximately 0.25" Deep
 - 1/4-28 Sensors: 6.8mm Drill Bit
 - Spot Face Sensors with Drill Bit
 - Spot Face Sensors with Drill Bit
 - Clean Debris from Surface
 - Install Sensor
- Suggested Mounting Kit**
- CNC2270-01-17 For 1/4-28 UNF Sensors
CNC2270-03-17 For M8x1.25 Sensors

THIS DOCUMENT IS ISSUED AS AN UNCLASSIFIED AND UNCONTROLLED INFORMATION. IT IS NOT TO BE USED FOR ANY PURPOSES WITHOUT WRITTEN CONSENT FROM STI. THIS DOCUMENT CANNOT BE REPRODUCED OR TRANSMITTED IN ANY FORM OR BY ANY MEANS, ELECTRONIC OR MECHANICAL, WITHOUT PERMISSION FROM STI.		CUSTOMER		STI		STI Vibration Monitoring League City, Texas	
LOCATION		ORDER NO.		DATE		CMCPI100 Series Side Entry with Temperature	
UNLESS OTHERWISE SPECIFIED ALL DIMENSIONS ARE IN INCHES.		TOLERANCES:		FRACTIONS:		DECIMALS:	
				XX ± 0.01		XX ± 0.01	
				XXX ± 0.005		XXX ± 0.005	
				XXX ± 0.0005		XXX ± 0.0005	
REV		DATE		DRAWN		SCALE: 1:1	
1							
2							
3							
4							
5							