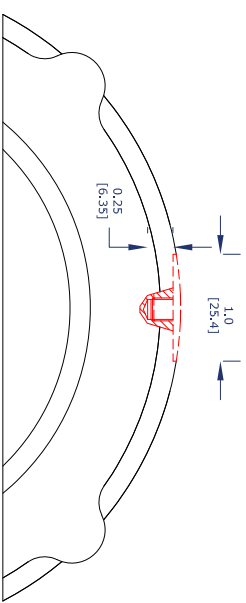
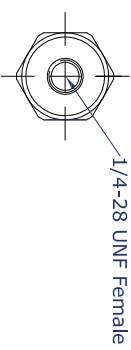
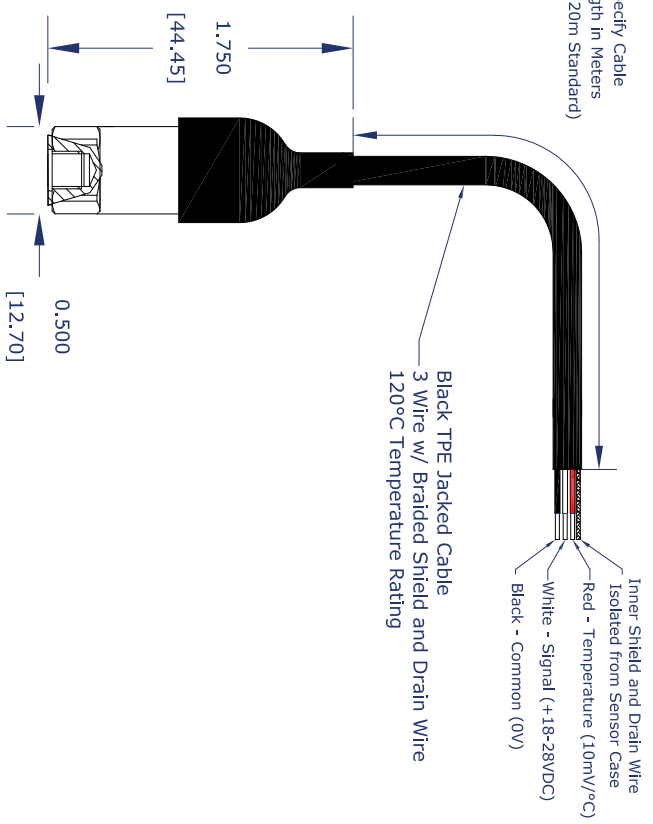


9 8 7 6 5 4 3 2 1

Specify Cable Length in Meters (5, 10 20m Standard)



- Installation**
1. Drill approximately 0.25" Deep 1/4-28 Sensors at 3 Drill Bit
 2. Spot Face Location Using 1/8" Countersink
 3. Tap Hole for Required Thread Size
 4. Clean Threads from Surface
 5. Install Sensor
- Suggested Mounting Kit**
- CNC2270-01-T for 1/4-28 UNF Sensors
 - CNC2270-02-T for M8x1.25 Sensors
 - CNC2270-03-T for M8x1 Sensors

THIS DOCUMENT IS THE PROPERTY OF STI AND SHALL BE RETURNED TO STI WITHOUT DELAY. IT IS NOT TO BE REPRODUCED OR TRANSMITTED IN ANY FORM OR BY ANY MEANS, WITHOUT PERMISSION FROM STI.

CUSTOMER	STI
LOCATION	
ORDER NO.	
SERIAL NO.	
DATE	

STI Vibration Monitoring
League City, Texas

REV	DATE	BY	DESCRIPTION
1			
2			
3			
4			
5			

UNLESS OTHERWISE SPECIFIED	ALL DIMENSIONS ARE IN INCHES.
TOLERANCES:	
DECIMALS	± 0.01
FRACTIONS	± 1/32
ANGLES	± 1.0
APPROX.	M. Howard
DATE	May 6, 2020

Drawn	M. Howard	Unit	May 6, 2020	Top Entry with Temp	REV
Checked	M. Howard	Rev	May 6, 2020	A	A
Scale:	1:1				

9 8 7 6 5 4 3 2 1