

## CMCP200T Triaxial Mounting Block



### Features:

- Holds Three Single Axis Accelerometers or 4-20mA Sensors
- Single Bolt Mount
- 1" (25.4mm) Rounded Mounting Surface
- Standard ¼-28 UNF Mounting Bolt
- 316 Stainless Steel
- Smooth Finish for Ideal Mounting Surface
- Includes Mounting Hardware

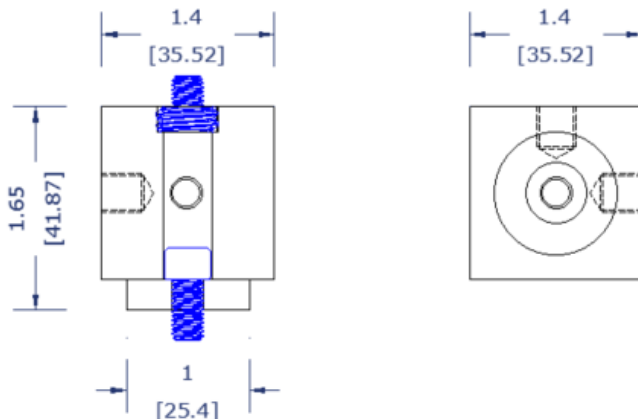
### Product Overview

The CMCP200T allows a user to install three single axis accelerometers on one mounting block to obtain Vertical, Horizontal and Axial measurements all from the same location and without the high cost of a triaxial accelerometer. The mounting block is threaded for industry standard ¼"-28 UNF threaded sensors and adapters can be purchased for other thread types. The CMCP200T is made from 316 Stainless Steel and has three polished sides to ensure an ideal mounting surface. The single bolt mounting configuration allows the user to install the block using a standard ¼"-28 UNF threaded screw. The ¼"-28 mounting bolt drops through the top sensor mounting hole and a threaded plug is then inserted to allow for a standard ¼"-28 threaded sensor to mount in its place. Adapters are provided for both male and female ¼"-28 sensors.

### Specifications:

Material:	316 Stainless Steel
Dimensions:	1.4" x 1.4" x 1.4" (35.5 x 35.5 x 35.5mm)
Sensor Mounting Thread:	Three 1/4"-28 UNF Sockets
Surface Mounting Thread:	¼-28 UNF (Mounting Bolt Included)
Suggested Drilling Depth:	0.30" (7.62mm)
Mounting Hardware:	Two 10-32 x 1.5" Socket Cap Screws
Weight:	9.8 Ounces

### Dimensions:



### Ordering Information

CMCP200T Triaxial Mounting Block