

## CMCP422VTS-D Series with Dynamic Output

4-20 mA Velocity Sensor, Side Exit, 3-Pin MS 5015 Connector



### Features

- Loop Powered 4-20 mA Output
- Velocity Output with RMS or Peak Detectic..
- 100 mV/g Dynamic Output
- Side Exit for Flush Installations
- 3-Pin MS 5015 or 4-Pin M12 Connector
- Interfaces Directly with Control Systems (PLC/DCS)
- Selectable Full-Scale Ranges
- 10 Hz to 1.0 kHz +/-5% Frequency Response (600 CPM to 60 kCPM)
- Sealed to IP68 (or IP67 with M12 Connector)
- -25 to +120°C (-13 to 248°F) Temperature Rating
- Lifetime Warranty

### Typical Applications

Fans, Motors, Pumps, Compressors, Centrifuges, Conveyors, Air Handlers, Gearboxes, Rolls, Dryers, Presses, Cooling, HVAC, Spindles, Machine Tooling, Process Equipment and many more.

### Technical Performance

Mounted Base Resonance:	5 kHz Min.
Analog Output:	4-20 mA, Between Pin 1 and 2
Dynamic Output:	100 mV/g Between Pin 3 and 2
Frequency Response:	10 Hz to 1.0 kHz ± 5%, (600 CPM to 60 kCPM), ISO 20816
Isolation:	Base Isolated
Measurement Range:	50 g peak
Transverse Sensitivity:	Less than 5% with Faraday Cage

### Electrical

Output Current:	4-20 mA DC Proportional to RMS or Peak Velocity
Supply Voltage:	15 to 30 VDC
Settling Time:	1 Second
Output Impedance:	Loop Resistance 600 Ohm Max @ 24 VDC
Case Isolation:	>10 <sup>8</sup> Ohm at 500 Volt
Ratings:	U <sub>i</sub> =28V; I <sub>i</sub> = 115mA; P <sub>i</sub> = 0.65W

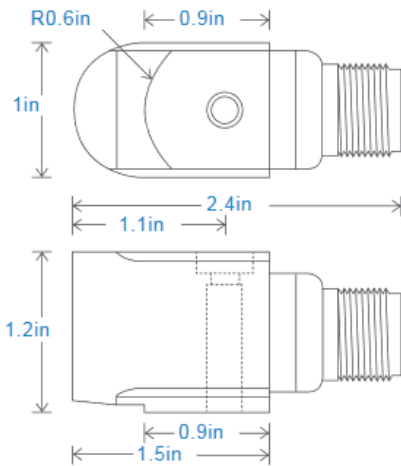
### Environmental

Operating Temperature Range:	-13 to 248°F (-25 to 120°C)
Sealing:	IP68 (IP67 with M12 Connector)
Maximum Shock:	5000 g

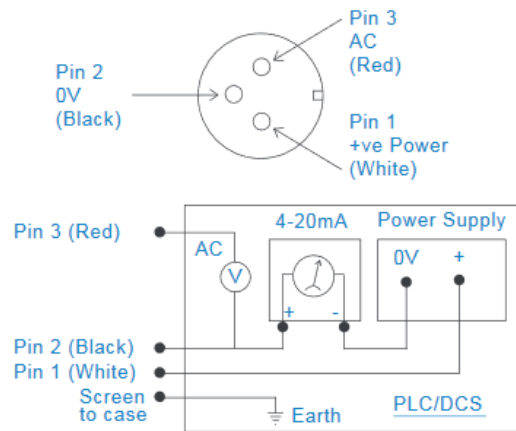
### Mechanical

Case Material:	Stainless Steel
Sensing Element:	PZT/Shear Type
Mounting Torque:	5.9 ft. lbs (8Nm)
Weight:	6.5 Oz (185 g) Sensor only
Mounting:	
CMCP422VTS-XXD-X-C:	1/4"-28 UNF Captive Bolt Supplied with Sensor
CMCP422VTS-XXD-X-C-M8:	M8x1.25 Captive Bolt Supplied with Sensor
Mating Connector:	
CMCP422VTS-XXD-X-C:	3 Pin MIL 5015 MS Connector
CMCP422VTS-XXD-X-M12:	4 Pin M12 Eurofast Connector

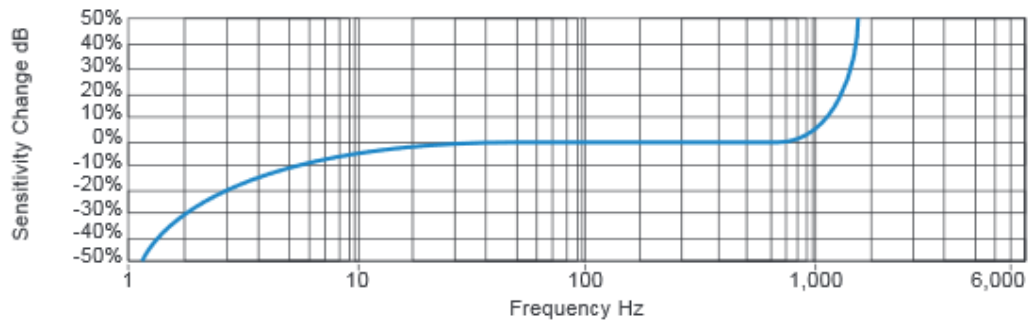
## Dimensions



## Connection Details



## Typical Frequency Response



## Ordering Information

CMCP422VTS	-XXD	-X	-XXX	Description
	-01D			1.00 In/Sec Full Scale (25.4 mm/s) with Dynamic AC Output
	-02D			2.00 In/Sec Full Scale (50.8 mm/sec) with Dynamic AC Output
		-R		RMS Detection
		-P		Peak Detection
			-C	<b>3 Pin MS 5015 Connector</b>
			-M12	M12 Eurofast Connector
			-I	Integral Braided Armor Cable (5 meter)
			-IP	Intergal PUR Cable (5 meter)

**Example Part Number:** CMCP422VTS-01D-R-C Loop Powered 4-20 mA Velocity Sensor, Side Exit, Full Scale 1.0 In/Sec, RMS Detection, Dynamic Output and 3 Pin MS 5015 Connector

## Similar Products



**Note:** Due to STI's continuous process improvement, specifications are subject to change without notice.