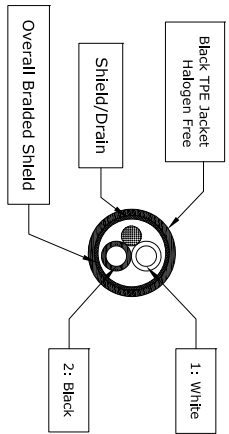
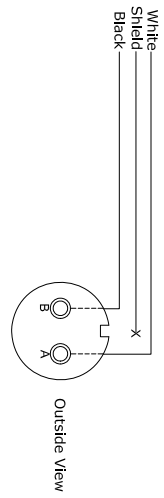


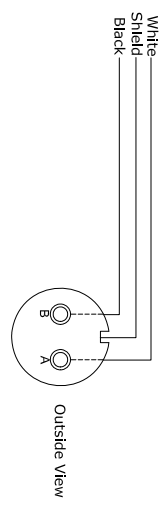
Cable Construction (2 Core TPE)



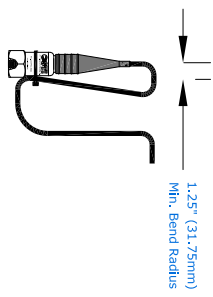
Isolated Shielding (-I Option)



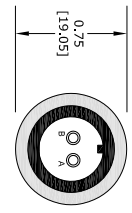
Non-Isolated Shielding (-NI Option)



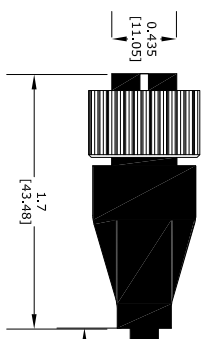
Maximum Cable Bend Radius



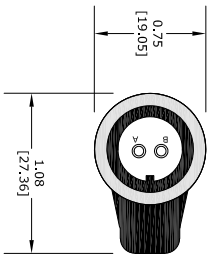
Bottom View



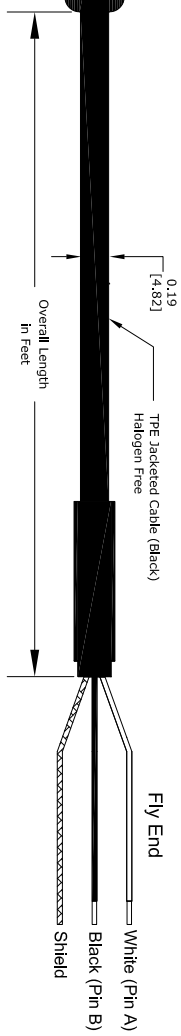
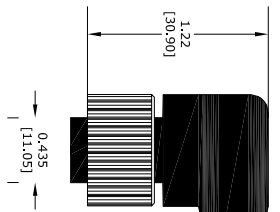
Side View



Bottom View



Side View



Ordering Information
CMCP632L-AA-BB-CC
 AA: Specify Cable Length In Feet
 -16 (16', 5m)
 -32 (32', 10m)
 -64 (64', 20m)
 Other - Specify Length In Feet
 BB: Connector Angle
 -01 Straight Exit
 -02 Side Exit (90 Degree)
 CC: Shielding
 -I (Shield Isolated at Connector, STI Standard)
 -NI (Non-Isolated, Shield Tied to Connector)

2 Pin MS Overmolded Plug Polyamide (Nylon) Connector with 316 Stainless Steel Shielding Cable
 Halogen Free TPE Cable
 Minimum Bend Radius of 1.25" (31.75mm)
 Connector Sealed to IP68 When Properly Connected to Sensor
 Maximum Resistance to Harsh Chemicals

THIS DRAWING IS THE PROPERTY OF SENSORS AND MONITORING LEAGUE. IT IS TO BE USED ONLY FOR THE PURPOSES SPECIFIED IN THE TITLE. IT IS NOT TO BE REPRODUCED OR TRANSMITTED IN ANY FORM OR BY ANY MEANS, WITHOUT THE WRITTEN CONSENT FROM SMI. THIS DOCUMENT CANNOT BE USED FOR ANY OTHER PURPOSES WITHOUT THE WRITTEN CONSENT FROM SMI.

Wire Color Code

| | |
|--------------------|------|
| Color | Code |
| White | W |
| Black | B |
| Red | R |
| Blue | BL |
| Green | GR |
| Yellow | Y |
| Purple | P |
| Brown | BR |
| Orange | O |
| Grey | G |
| Light Blue | LB |
| Light Green | LG |
| Light Yellow | LY |
| Light Purple | LP |
| Light Brown | LBW |
| Light Orange | LOW |
| Light Grey | LGW |
| Light Light Blue | LLB |
| Light Light Green | LLG |
| Light Light Yellow | LLY |
| Light Light Purple | LLP |
| Light Light Brown | LLBW |
| Light Light Orange | LLOW |
| Light Light Grey | LLGW |

| | | | |
|--|--|---|--|
| CUSTOMER | | STI | |
| LOCATION | | STI Vibration Monitoring League City, Texas | |
| ORDER NO. | | CMCP632L DWG | |
| UNLESS OTHERWISE SPECIFIED ALL DIMENSIONS ARE IN INCHES. | | SCALE: 1:1 | |
| TOLERANCES: | | DECIMALS: ± 0.01 | |
| FRACTIONS: XX ± 1/32 | | ANGLES: ± 1.0 | |
| DRAWN: M. HANWARD | | DATE: 12/11/2023 | |
| CHECK: M. HANWARD | | DATE: 12/11/2023 | |
| DESIGN: M. HANWARD | | DATE: 12/11/2023 | |
| APPR: M. HANWARD | | DATE: 12/11/2023 | |
| REV | | DATE | |
| DESCRIPTION | | DATE | |